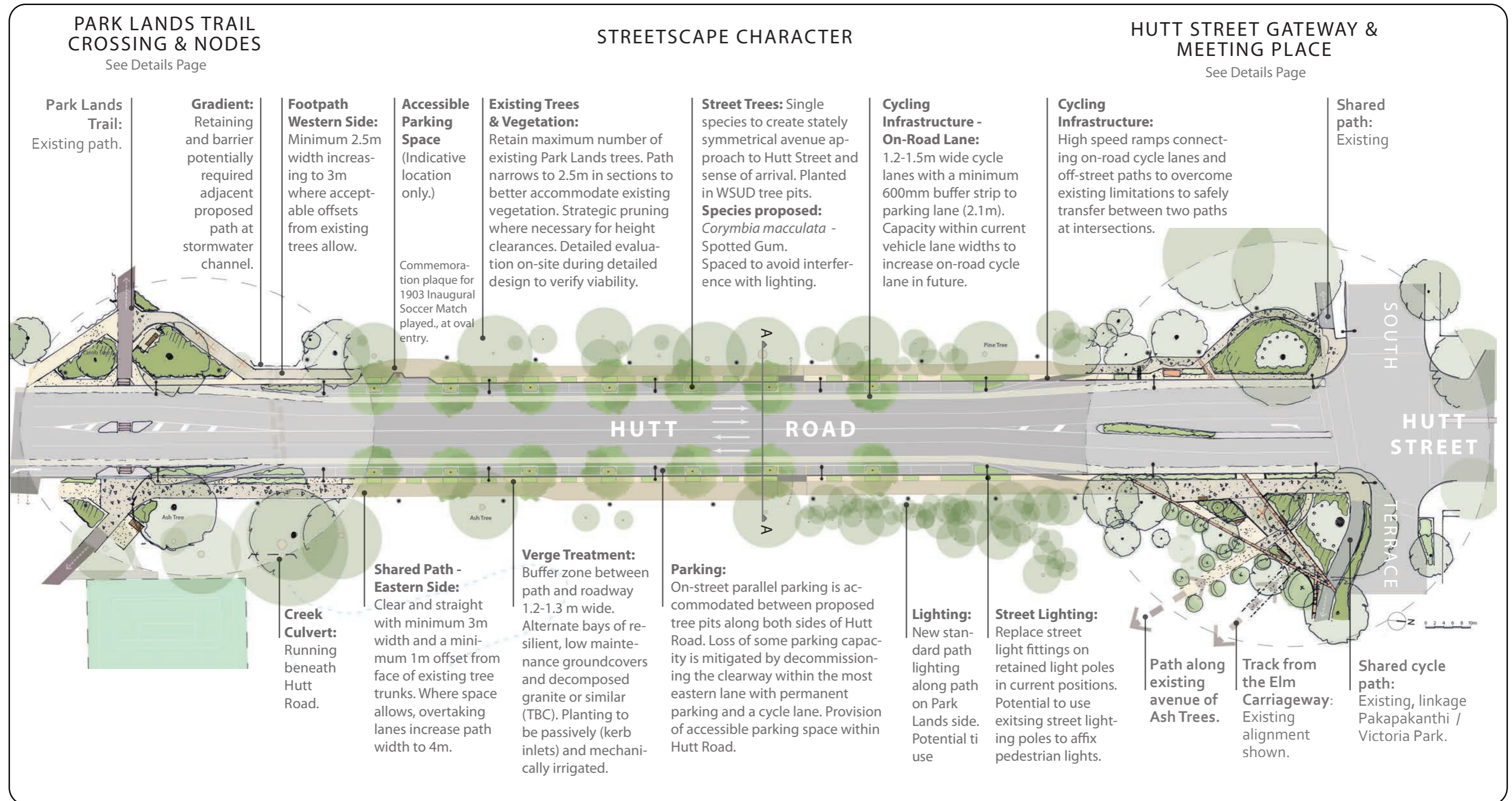
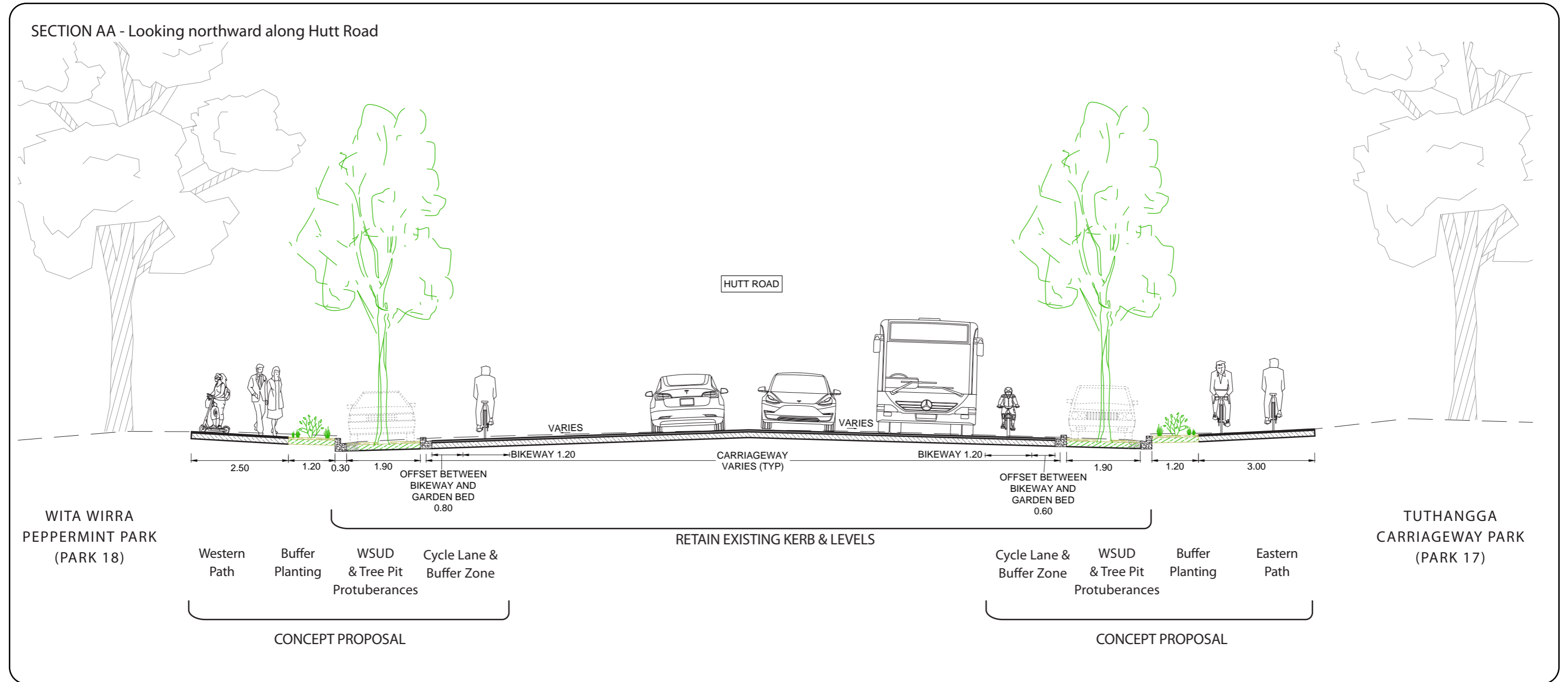


## Concept Plan - Entry Statement & Streetscape



# Hutt Street Entry Statement - Concept Design 30% / October 2022

## Indicative Cross-Section: Street Tree Plantings and Paths



# Hutt Street Entry Statement - Concept Design 30% / October 2022

## Details - Meeting Place / Gathering Node

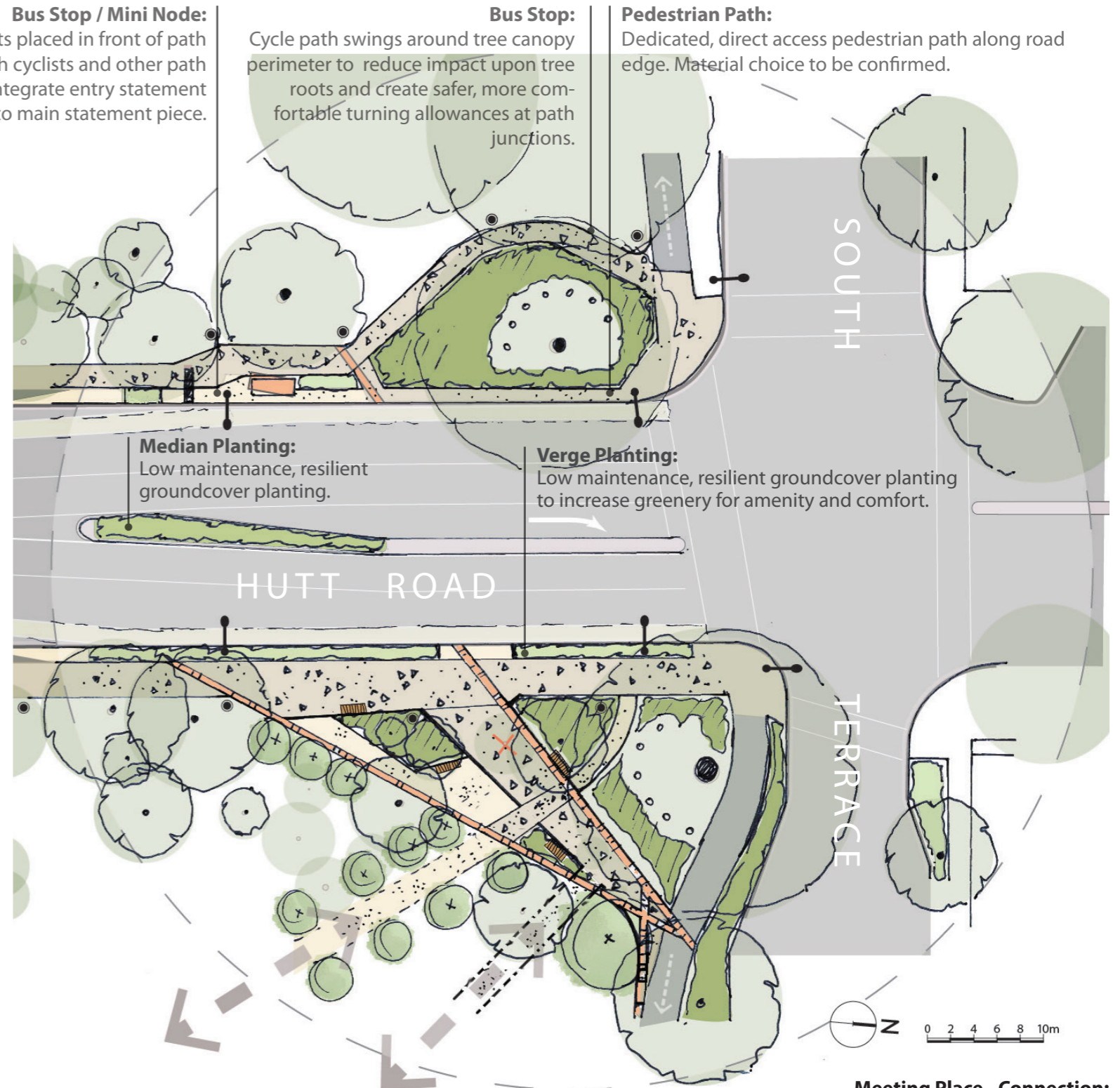
### EXISTING CONDITIONS



**Bus Stop / Mini Node:**  
Seating/shelter elements placed in front of path to reduce conflicts with cyclists and other path users. Opportunity to integrate entry statement design language or link to main statement piece.

**Bus Stop:**  
Cycle path swings around tree canopy perimeter to reduce impact upon tree roots and create safer, more comfortable turning allowances at path junctions.

**Pedestrian Path:**  
Dedicated, direct access pedestrian path along road edge. Material choice to be confirmed.



**Destination & Departure - Inviting and Welcoming:**  
Use plantings to reinforce connections, viewlines and tempting glimpses along the Ash Tree Avenue path (pleasantly enclosed) and to the Elm Carriageway (impressive, stately scale). Create a unique framed view from the Ash Tree Avenue path of Hutt Street - including significant gum trees, street trees, and Davaar House beyond.

**Statement Piece - Identity:**  
A dedicated space for the creation of a statement artwork visually defining the entry to Hutt Street. The artwork could be a single element or a series of pieces throughout the space. The detailed design of the space and the developing artwork(s) will inform one another in an iterative process.

**Meeting Place - Connection:**  
A new informal local meeting place and resting spot at the junction of many paths where Hutt Street meets the Park Lands and welcomes visitors from beyond.

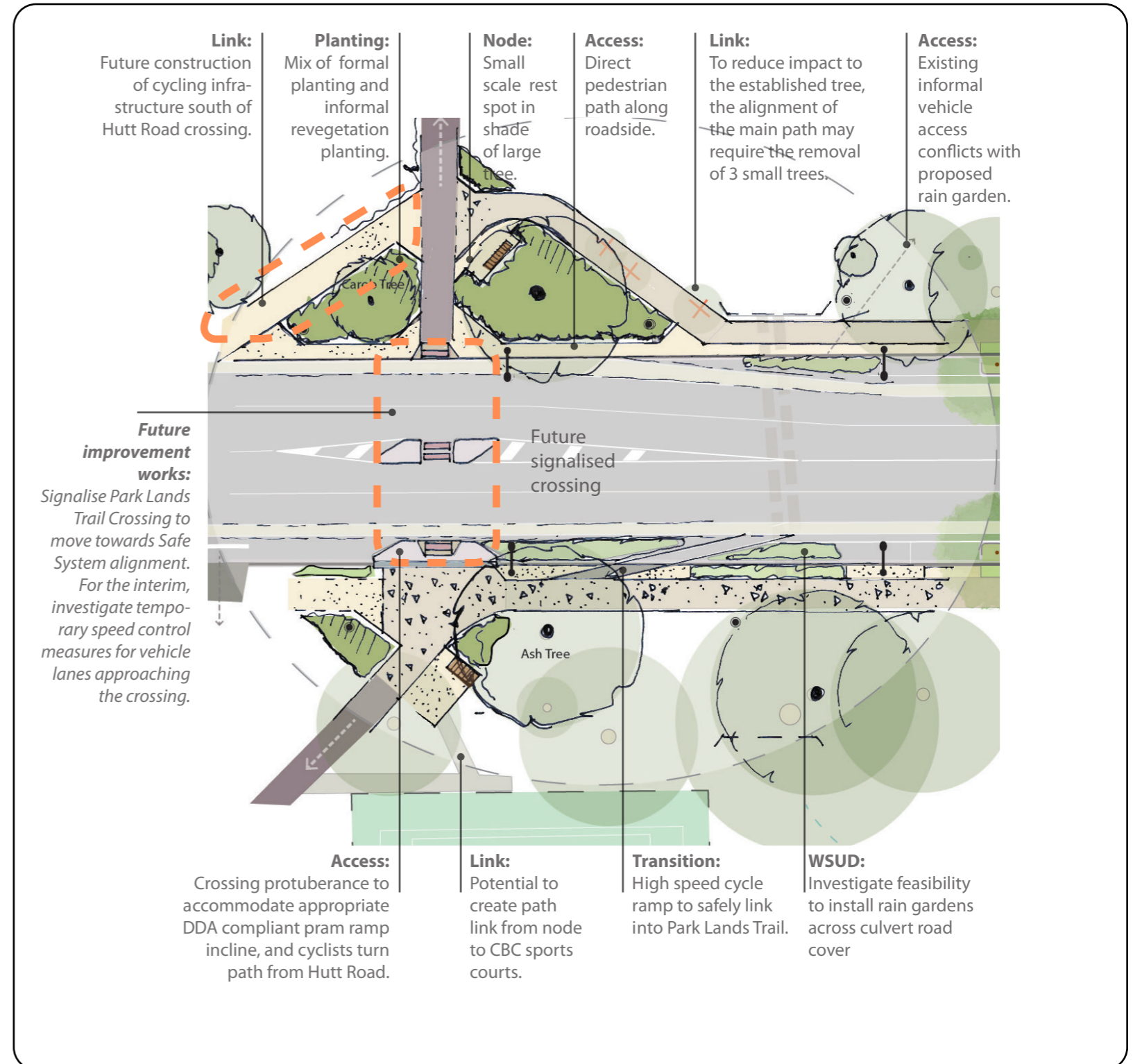
# Hutt Street Entry Statement - Concept Design 30% / October 2022

## Park Lands Trail Nodes

### EXISTING CONDITIONS



Looking northward.

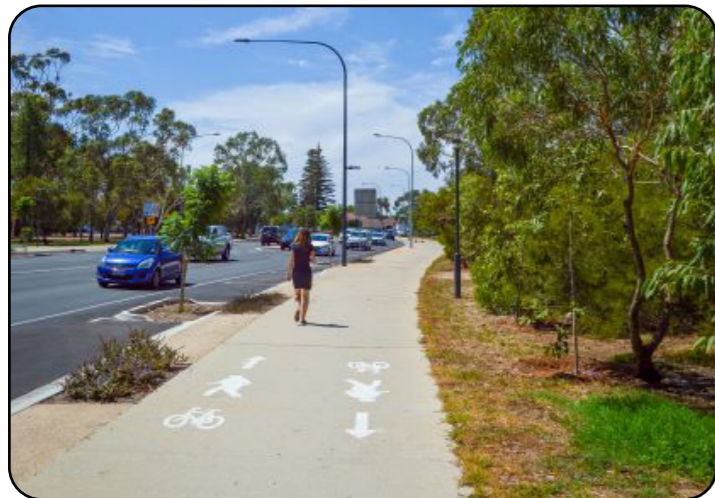


PARK LANDS TRAIL - HUTT ROAD CROSSING WITH PROPOSED NODES

# Hutt Street Entry Statement - Concept Design 30% / October 2022

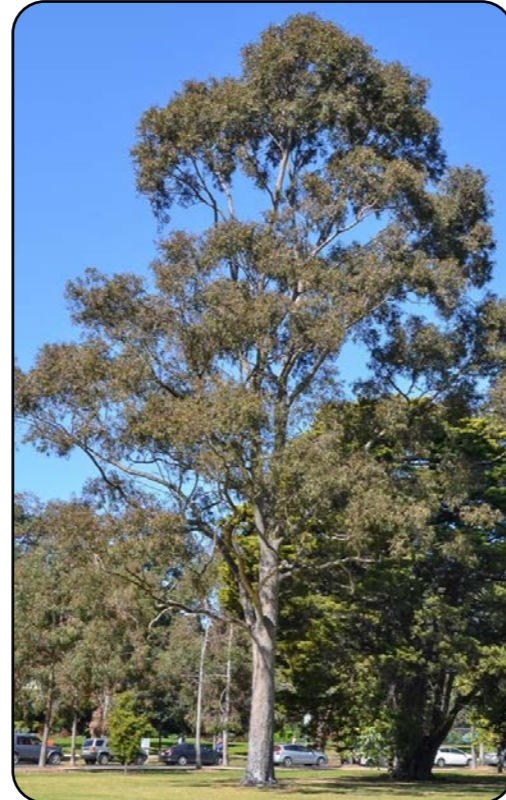
## Precedent Images:

### STREETScape



Prospect Road -  
North Park Lands Entry Road

### PLANTING



*Corymbia maculata* - Spotted Gum



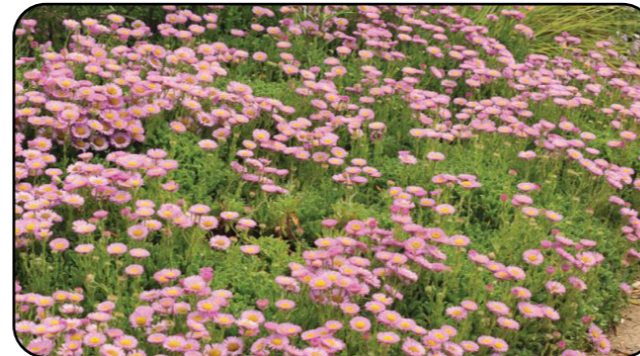
*Liriope muscari* 'Amethyst'  
- Lily Turf



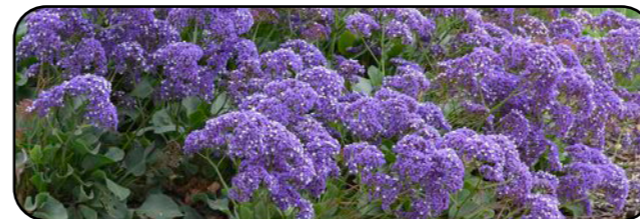
*Chrysocephalum apiculatum*  
- Common Everlasting



*Euryops pectinatus* 'Little Sunray'  
- Yellow Marguerite



*Erigeron glaucus* 'Sea Breeze'  
- Blue Leaf Seaside Daisy

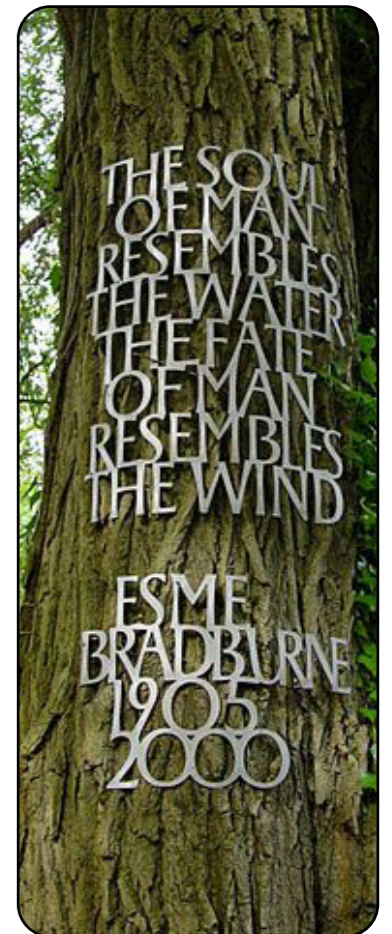


Accent: *Limonium perezii* - Sea Lavendar



Rain Gardens: *Ficinia nodosa*  
- Knobby Club-Rush

### PUBLIC ART



# Hutt Street Entry Statement - Concept Design 30% / October 2022

## Precedent Images: Wayfinding Signage

PARK LANDS TRAIL & PARK LANDS SIGNAGE SUITE



CoA URBAN SUITE



LINKING INTERPRETIVE TRAIL HUTT STREET - HERITAGE & ARTISTIC



## Artistic Impression



View north along Hutt Road to the South Terrace intersection